

IMPORTANT INFORMATION

Legal information:

- ESX Car Audio Systems and Audio Design GmbH are in no way affiliated with the named vehicle manufacturers or their subsidiaries or act on their behalf or with their authorization.
- All protected product names and brand names are the property of their respective owners.
- The compatibility with the specified vehicles corresponds to the information status September 2022.
- Technical changes and errors are subject to change.

Customer service:

As a rule, the assembly and installation of the sound system should be carried out by a trained and technically experienced specialist. If you decide to do the installation yourself, please contact your specialist car audio dealer or the Audio Design GmbH service department by e-mail at speakers@audiodesign.de if you have any problems.

Compatibility:

Renault Master III (from Facelift 1, 2014)

- Plug+Play only for the mid-bass speakers in the door
- Tweeters must be installed in the mirror triangle

Scope of delivery:

2 x woofer incl. integrated crossover and connection cable

2 x tweeter including cable crossover

6 x blind rivet

Disposal:



If you have to dispose the device, please note that no electronic devices may be disposed in the household waste. Dispose the device in a suitable recycling facility in accordance with local waste regulations. If necessary, consult your local authority or your dealer.

SPECIFICATIONS

QXR6.2C

16 cm (6") 2-way component system

90 Watts RMS / 180 Watts max.

Nominal impedance 3 Ohms

Frequency range 50 - 22000 Hz

160 mm woofer with fiber reinforced cone

6 dB crossover woofer integrated in the basket

25 mm silk dome neodymium tweeter

6 dB cable crossover for tweeter (cutoff frequency 3700 Hz)

NOTES ON INSTALLATION:

The following instructions are an installation aid for the professional installation of the sound system. The installation steps described may vary in other vehicles or vehicles with different equipment.

In general, observe the following information:

- Please treat all parts of the sound system and the components of your vehicle with care.
- Under all circumstances, observe the vehicle manufacturer's instructions and do not make any changes that could impair driving safety.
- Be sure to observe the correct polarity when connecting.

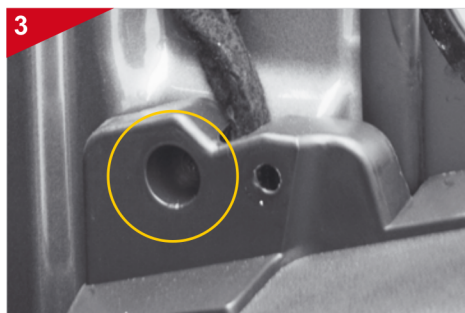
A - INSTALLATION OF THE SPEAKERS



Start with the passenger door on the right first. Then repeat all installation steps on the driver's door on the left. The door panel is screwed on at the points marked above. After loosening the screws, the door panel can then be unclipped.



Start by removing the mirror triangle cover using a mounting wedge.



Remove the door panel screw below the mirror triangle.

A - INSTALLATION OF THE SPEAKERS



Proceed to the screw above the large side compartment. Remove the cover and the screw underneath.



Remove the cover and screw of the small storage compartment at the level of the door opener.



Proceed to the screw in the door opener.



Lever out the door opener with a mounting wedge.



Unlock the clipped-in Bowden cable on the door opener and put it aside.



Lever out the electric window console with a mounting wedge.

A - INSTALLATION OF THE SPEAKERS



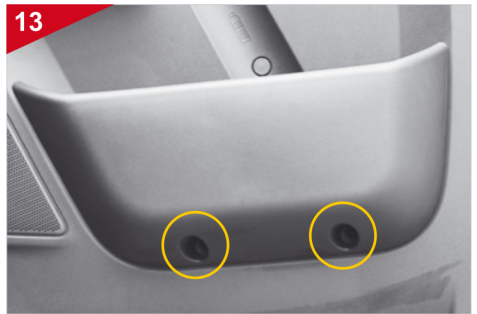
10 Remove the electric window connector and set it aside.



11 Then lever out the door handle with a mounting wedge.



12 Unscrew the two screws under the door handle.



13 Then loosen the two screws at the bottom of the large side compartment.



14 Finally, unscrew the screw on the top right of the door panel and the screw underneath on the outside.



15 You can then unclip the complete door panel from the door and put it aside.

A - INSTALLATION OF THE SPEAKERS



The original speaker is riveted three times.



Remove the original speaker connector.



Use a suitable metal drill to drill out the three rivets on the original speaker in order to be able to remove it.



Then insert the new ESX loudspeaker and rivet it using the enclosed rivets and suitable rivet pliers.



Plug the included cable set into the new ESX speaker and connect the vehicle's connector to the free white connector.



Route the other end of the harness with the brown connector to the mirror triangle. This is the connection for the enclosed tweeter.

B - INSTALLATION OF THE TWEETERS



Since no tweeters are originally installed ex works, you can use the cover of the mirror triangle to attach them.



Determine a suitable position and screw one of the enclosed installation housings using two suitable self-tapping screws.

Then, using a plastic cone/step drill, drill a hole of about 15mm to allow the tweeter's white connector plug to fit through. You must then connect this to the brown plug of the connecting cable that has been brought up.

Alternatively, you can also install the tweeters completely recessed in the cover. To do this, you must drill a hole with a maximum diameter of 39 mm in the cover.

C - ASSEMBLY



Fasten the door panel, observing steps 14 -3 in reverse order.



Then put the cover of the mirror triangle back in the door and make sure that the connection cable of the tweeter is not kinked or crushed. Repeat all work steps for the driver's door on the right.